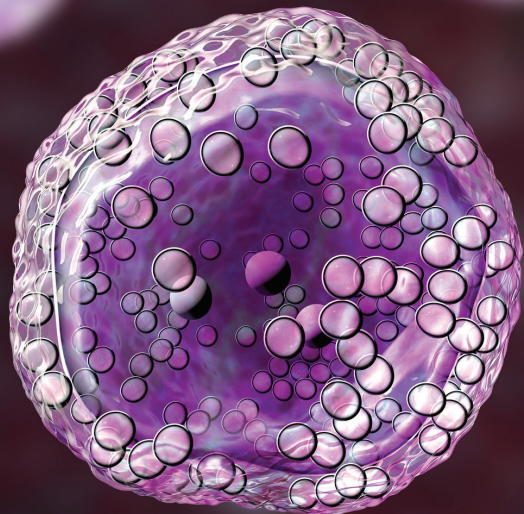


Tower Health Partners®: Spotlight on...

# ASSOCIATES IN HEMATOLOGY-ONCOLOGY, PC



## ASSOCIATES IN HEMATOLOGY-ONCOLOGY, PC

Brandywine Professional Building  
213 Reeceville Road, Suite 37  
Coatesville, PA 19320

**Phone:** 610-383-6488

**Fax:** 610-876-6923

[Brandywine.TowerHealth.org](http://Brandywine.TowerHealth.org)

### PHYSICIANS

Raymond Vivacqua, MD  
W. Alan Keogh, DO  
Arezoo Ghaneie, MD  
Mylene Go, MD  
Ronald Swaab, MD  
Joseph Tropea, DO



W. Alan Keogh, DO



Ronald Swaab, MD

### OFFICE HOURS

Monday to Thursday  
8:30 a.m. to 4 p.m.

### PRACTICE FOCUS

Associates in Hematology-Oncology specializes in the diagnosis and treatment of blood diseases and cancer for patients 18 years and older. We have 50 years' experience in the management of these disorders. There have been major advances in this field of medicine, especially in the last 15 years. We believe strongly that success in treatment involves advances in cancer and blood diseases, advocacy for the patient and availability of your physician. Our physicians specialize in the following:

- Breast cancer
- Lung cancer
- GI cancer
- Colon cancer
- Pancreatic cancer
- Lymphomas
- CLL/CML
- Myelodysplastic disorders
- Anemia
- Increased/decreased blood counts

### REFERRALS

Associates in Hematology-Oncology welcomes physician referrals. To refer a patient, call 610-383-6488 or send a fax to 610-876-6923.

